



CHAHAR BAGH

BY RAVI URBAN DEVELOPMENT AUTHORITY





A Letter from our CEO

Goldfinch is a land acquisition and development company registered with Ravi Urban Development Authority (RUDA). As an authorized land provider, Goldfinch is actively acquiring land for critical infrastructure developments, including Chahar Bagh project which spans over 2,200 acres.

Our vision at Goldfinch is to redefine the urban landscape, creating sustainable developments that resonate with the aspirations of the community. From the land we acquire to the cities we build, every step is a commitment to excellence and sustainability.

Haris Khan

Introduction of RAVI URBAN DEVELOPMENT AUTHORITY



The Ravi Urban Development Authority (RUDA) was established to develop Ravi City into a sustainable, livable, and eco-friendly metropolis. Approved by the Punjab Assembly through an Act of Parliament in July 2020, Ravi City spans 140,000 acres along a 46-kilometer stretch of the Ravi River, making it the largest riverfront city.

This transformative initiative is designed to address major urban challenges, including overpopulation, traffic congestion, environmental pollution, water scarcity, and flooding risks. Once completed, Ravi City will rank among the largest urban centers globally, spanning 414 square kilometers and accommodating over 8 million residents. This landmark project alone is projected to contribute \$12 billion to Pakistan's economy.

WHERE MODERNITY
EMBRACES HISTORY

Welcome to Chahar Bagh



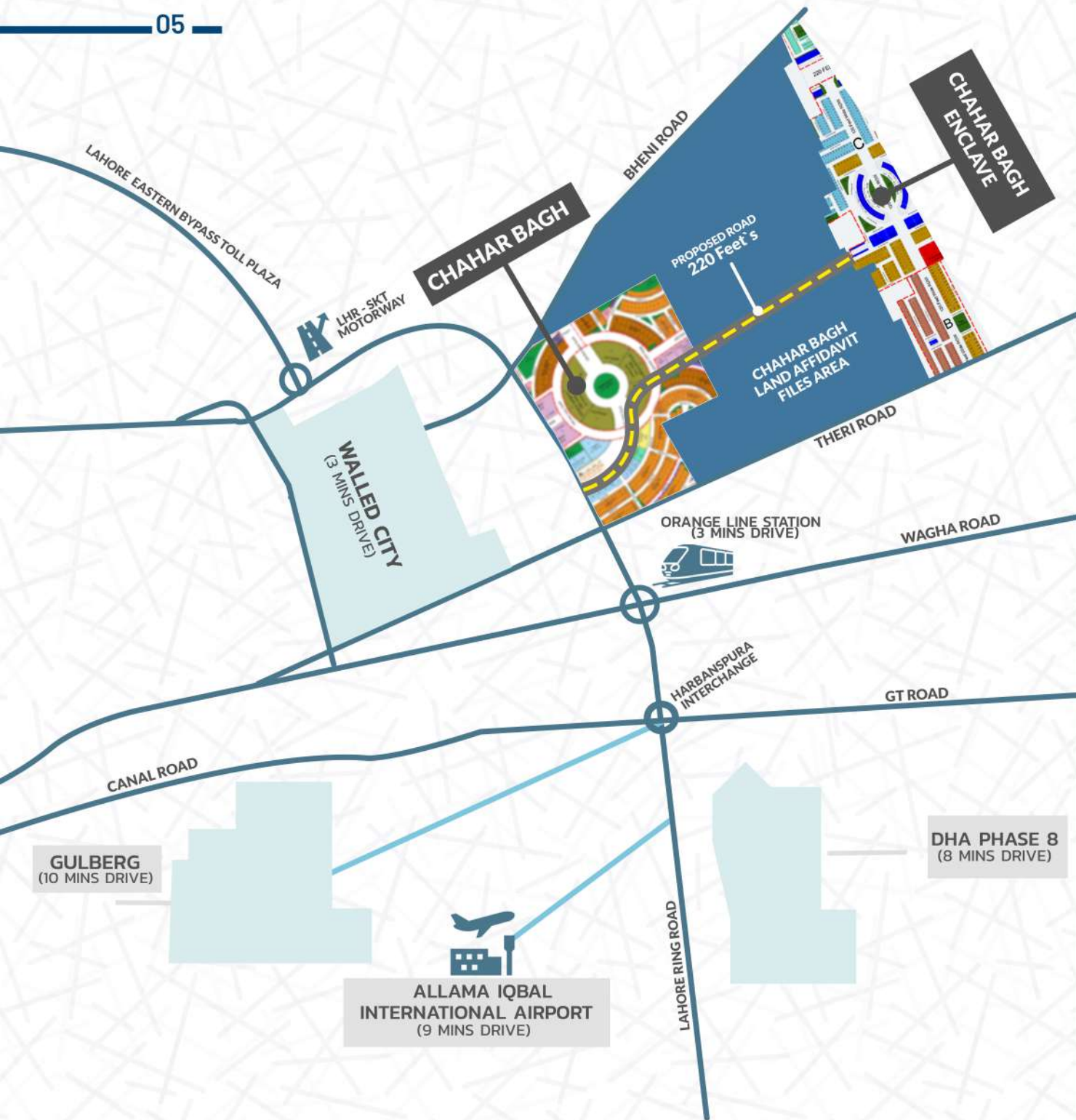


Introduction of Chahar Bagh

Chahar Bagh is a prestigious, master-planned development within RUDA, setting new benchmarks in modern urban living. Spanning 2,200 acres, it draws inspiration from Mughal gardens, blending historical elegance with contemporary architecture, smart city solutions, and eco-friendly infrastructure. Strategically located, it offers luxurious villas, high-rise apartments, mid-rise buildings, and commercial complexes, all integrated with 220-foot boulevards, lush landscapes, and top-tier amenities.

As one of RUDA's most ambitious projects, Chahar Bagh offers a lucrative investment opportunity with affidavit files for buyers and investors. With its prime location, futuristic vision, and world-class infrastructure, it is set to become Lahore's most sought-after address.





STRATEGIC LOCATION

Chahar Bagh's strategic location ensures seamless connectivity to major highways, premium amenities, and future developments, making it a prime investment hub within Lahore's RUDA district, offering unparalleled convenience and growth opportunities.



A WORLD-CLASS LIFESTYLE DESTINATION



2200 ACRES



WIDE ROADS



09

MINS DRIVE

ALLAMA IQBAL
AIRPORT



CCTV MONITORING



TRUMPET
INTERCHANGE



7 STAR HOTEL



GOLF COURSE
& CLUB HOUSE



REPORTAGE DUBAI
4 MEGA TOWERS



LAHORE GRAMMAR
SCHOOL



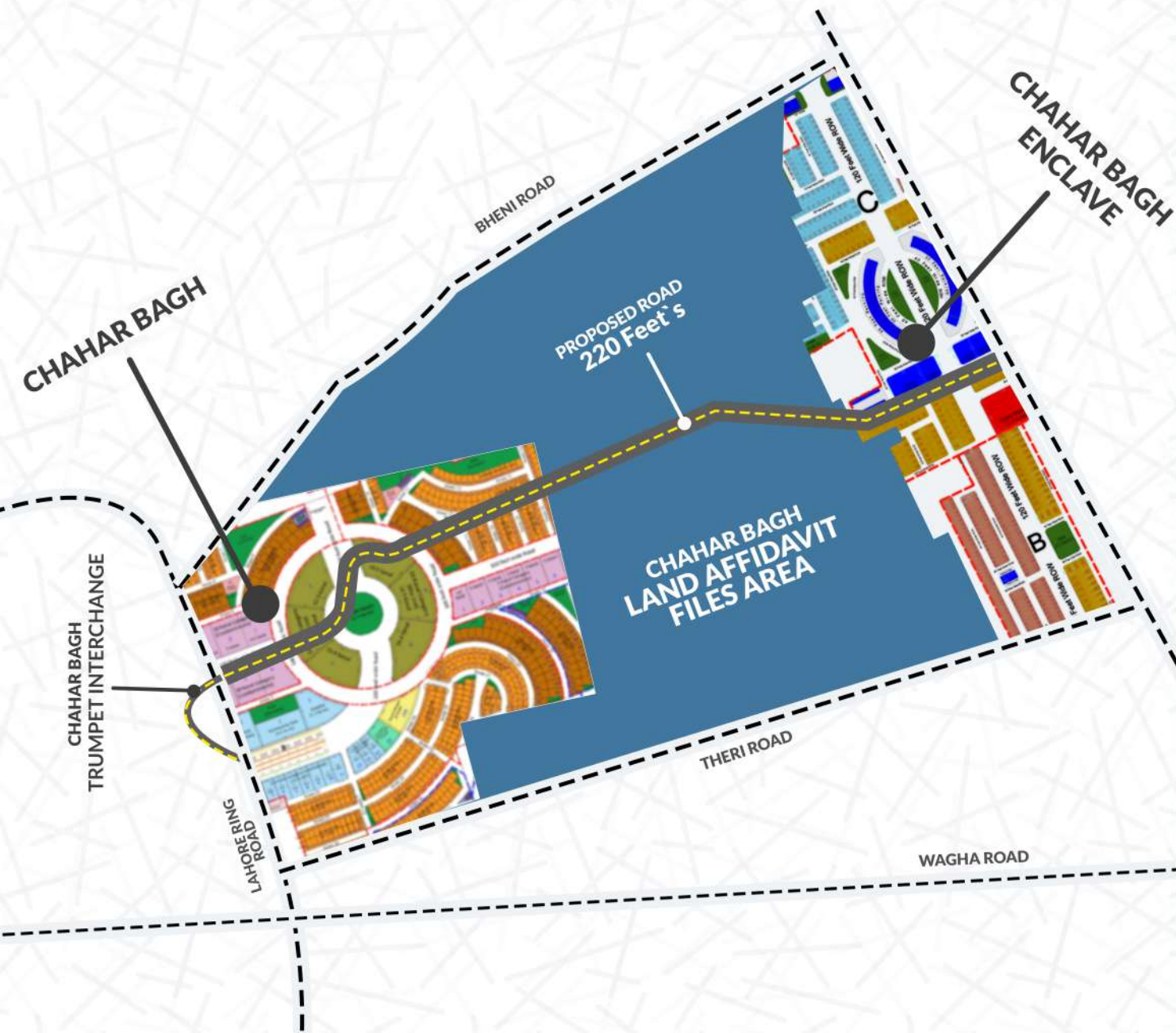
RENEWABLE
ENERGY



FOREIGN
CONSULATE



UNDERGROUND
SUI GAS WIRING



PLACEMENT OF AFFIDAVIT FILES

Chahar Bagh Affidavit files will be allocated in the designated area on the map, strategically positioned between Chahar Bagh and Chahar Bagh Enclave, ensuring prime accessibility and excellent investment potential.

PAYMENT PLAN

CATEGORY OF FILES	RUDA PRICE (3YRS INSTALLMENT)	GOLDFINCH PRICE (AFFIDAVIT CASH FILES)
5-Marla Residential	6,000,000/-	3,500,000/-
10-Marla Residential	15,000,000/-	7,500,000/-
1-Kanal Residential	27,500,000/-	13,500,000/-
5-Marla Commercial	50,000,000/-	22,500,000/-



CONTACT US

• For more information on CHAHAR BAGH
please call +92 300 4828384 (PAK) / +44 7308 371 793 (UK)
or talk to our Property Advisor directly at +92 300 4828384 from 9 AM to 7 PM (GST), Monday to Saturday.
Visit our online sales centre at msggoldfinch.com or email us your queries at info@msggoldfinch.com

HEAD OFFICE

GOLDFINCH OFFICE, PLAZA 100, MM ALAM ROAD
LAHORE, PAKSITAN
9:30 AM TO 10 PM, MONDAY- SATURDAY

GOLDFINCH ONSITE OFFICE, CHAHAR BAGH, RUDA
LAHORE, PAKSITAN
9:30 AM TO 8 PM, MONDAY- SATURDAY

